

MF Fire Shipping Damage Guide

Hello and welcome to the MF Fire Shipping Damage Guide. Despite our high-quality packaging, the freight world can be unkind to us at times during the trip from our facility to your home. With this said, we are here to inform you that not all damage is a show-stopper. In this guide, you will see examples of both acceptable damages and refusable damages you can reference when inspecting your beautiful MF Fire wood stove upon arrival.



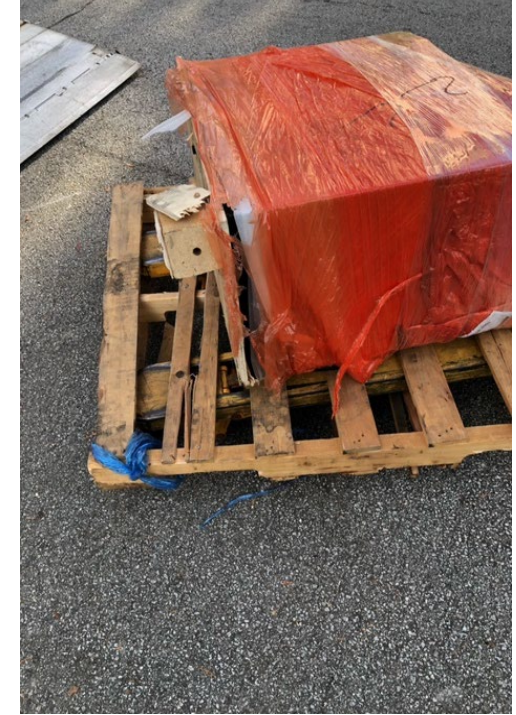
MF FIRE



Acceptable Damages

Acceptable damages can occur, some of which may include:

- Cracked/missing Slats on the crate
- Dinged-up crates
- Rips in shrink wrap
- Stove paint scratches (not deep scratches)
- Crushed boxes on top of the stove (request replacements if damaged)



Refusable Damages

Refusable damages can also occur, some of which may include:

- Broken glass
- Punctured shrink wrap resulting in metal gouges
- Dented metal
- Broken or bent external components
- Missing crate upon delivery
- Stove arriving on its back